

Tides

THE NEWSLETTER OF ST. ANTHONY BASIN RESOURCES INC.

APRIL 2012

SABRI Shrimp Allocation Harvested by Inshore Vessels and landed at St. Anthony Seafoods for 2011/12 Harvesting Season



SABRI and Clearwater made a joint request to DFO for permission to have the SABRI shrimp allocation harvested by the inshore fleet for the 2011/12 harvesting season. 2011/12 was a refit year for Clearwater's offshore vessel operations and catch rate projections pointed to a shortfall in landings against available quota for the season.

It was anticipated that the landing of the 3000 mt allocation would benefit plant workers and inshore harvesters and as well provide other economic benefits through the spin-off activity created in the region. If the full allocation was landed as raw material, projections were for an additional \$680,000 in payroll income to the plant workers of St. Anthony Seafoods and \$3,300,000 of additional income to the inshore harvesters. This arrangement is in keeping with the mandate of SABRI which is ***To administer a 3000 metric tonne allocation of Northern Shrimp on behalf of the communities from Big Brook to Goose Cove, in a manner resulting in expansion of***

the region's economic base and improved employment opportunities in harmony with a rural setting and lifestyle.

While there was much controversy created over this decision by various organizations, SABRI and Clearwater maintains that this was a decision that hurt no one and benefited many. The shrimp allocation was not given to the region as an offshore allocation, the harvesting agreement in place with Clearwater since 1997 is the reason for the shrimp having been fished by the offshore. SABRI and Clearwater jointly agreed that having the shrimp fished by inshore vessels and landed at St. Anthony Seafoods for this harvesting season was in the best interest of the region to which the shrimp allocation was granted. We are very pleased with the economic benefits resulting to the region as a result of this decision and are looking forward to being reinstated the flexibility that we had in 1997; of administering the allocation in a manner that brings the most benefits to our region.

Supporting Youth Initiatives

Recreation Donations

SABRI continues to support youth development within the region through donations to recreational organizations. In 2011 SABRI provided a total of \$13,200 in grants to the following organizations:

Junior Girls Broomball	\$1,925
Junior Boys Broomball	\$1,350
Dolphins Swim Team	\$1,350
Viking Trail Ski Club	\$1,350
Northern Blades Figure Skating Club	\$1,925
Aurora Nordic Ski Club	\$1,925
St. Anthony & Area Minor Hockey Association	\$3,375



SABRI Northern Prawns

SABRI is the corporate sponsor for the Junior Girls Broomball team, ***SABRI Northern Prawns***. The team has excelled and has taken the Provincial Junior Championships for 1998-1999. 2003- 2005, 2007 - 2011. In 2012 the white team in the photo below won the Silver medal in the Provincial Championships. Congratulations!!

The Provincial Junior Broomball Championships for 2011 were held in St. Anthony in February with teams participating from all over the province, SABRI was proud to sponsor the awards for the tournament with a financial contribution of \$775.



Supporting Youth Initiatives

SABRI Donations to various groups & organizations in 2011 exceeded \$30,000

SABRI supported many initiatives within the region during 2011 with total donations exceeding \$30,000.

The donation of \$20,000 to the Grenfell Foundation, as reported in Tides 2011 was designated for the purchase of a Typanometer which is used to evaluate the function of the middle ear.

Some other donations for 2011 were:

- \$400 donation to “Stand Up to Bullying Day”
- \$500 for James Cook Memorial Students to Attend Student Leadership Conference
- \$2500 sponsorship to St. Anthony Come Home Year
- \$600 to Junior Achievement Program delivered to Grade 9 students at Harriot Curtis Collegiate
- \$1,000 to local Powerlifters Joanne Payne and Shaun Penney to assist with costs associated with travel to participate in both the National and World Powerlifting Competitions in 2011.
- \$1,263 to purchase a new sofa for the Boys and Girls Club
- \$500 to assist with start-up costs for The 3rd St. Anthony Beavers



Shaun Penney & Joanne Payne



Donation of sofa to Boys & Girls Club



3rd St. Anthony Beavers

Scholarships & Bursaries

SABRI is proud to offer scholarships and bursaries annually to Level III students within the region who plan to pursue post secondary education; a total of \$11,400 in awards were granted in 2011. Two Scholarships of \$3,000 each were awarded to

Alana Simms and Jonathan Young, both of Harriot Curtis Collegiate. Nine other students who are shown in the photos below each received bursaries of \$600.

Bayview Regional Collegiate



Megan Burden



Carly Hillier



Justin Earle

Harriot Curtis Collegiate



Megan Bennett



Zane Humby



Alana Simms



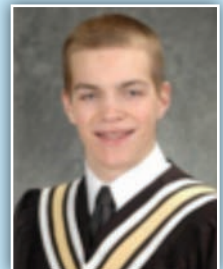
Alexander Powell



Ian Warren



Jonathan Young



Stevon Fowler

Special thanks to long serving Board Members

Thank you to Founding Chairman, Charles Reardon for fourteen years of dedicated service to St. Anthony Basin Resources Inc. Charlie represented workers at St. Anthony Seafoods since 1997, and have spent countless volunteer hours during the past fourteen years working hard on behalf of the entire SABRI region. Charlie resigned his position on the Board in May 2011 when he accepted a management position in the engineering division at St. Anthony Seafoods. We wish you every success Charlie.

Also, thank you to Guy Hurley, who represented Fish Harvesters residing in the area from Big Brook to Ship Cove. Guy served on the Board for twelve years and dedicated countless volunteer hours working hard on behalf of the SABRI region. We wish you every success Guy.

"Thank you to Arthur Kinsella, who represented the Town of St. Anthony. Arthur served on the Board for 6 years and dedicated many volunteer hours working hard on behalf of the SABRI Region. We wish you every success Arthur."

Support for Fisheries Initiatives

Marine Hydraulic Yard Trailer

SABRI partnered with St. Anthony Port Authority in 2010/11 on a 50/50 cost shared basis to purchase a Y-30 Marine Hydraulic Yard Trailer. The Port Authority took delivery of the trailer in May 2011. The trailer was first used to take vessels out of the water in the Fall of 2011 at the Grenfell Dock facility. This facility was used as a temporary site, however the ramp width and grade are inadequate for this trailer. The Port Authority is working toward sourcing funding to construct a ramp and lay down area at Murray's Point to operate the trailer from.



Herring Traps and Mackerel Traps

SABRI contributed \$15,000 for groups of Fish Harvesters in Straitsview and Noddy Bay to purchase twine to use for construction of two Herring Traps, and to a group from St. Anthony Bight and St. Carol's to construct a Mackerel trap. The Harvesters have a buyer who has committed to purchase their product in the upcoming season. These investments by SABRI provide Harvesters with the infrastructure necessary to enhance their opportunity to fish these species on a viable basis.

Hauling Equipment Upgrades

SABRI contributed \$10,000 for groups of Fish Harvesters in Raleigh and North Boat Harbour to upgrade hauling equipment on vessels used to fish mackerel and halibut. This upgrade in equipment will provide the opportunity for the Harvesters to generate more revenue into their operations through increasing their landing capacity.

Ice Breaking

SABRI has partnered with the Port of St. Anthony since 2007 by contributing to the cost of providing icebreaking services for St. Anthony Harbour. SABRI invested \$2,500 to this initiative in 2011.

Bait

In 2011 SABRI continued with the fourth year of a Bait Program to provide bait to Fish Harvesters who reside within the SABRI region who use bait for the species that they catch as well as sell their product to a processor within the region. This is not only a benefit to Harvesters but also to Plant Workers as it provides additional product being landed and processed within the region. Other economic activity is also generated through spin-off activities such as offloading and trucking the product. SABRI invested a total of \$51,916 into this program in 2011 and plan to continue the program in the 2012 season.

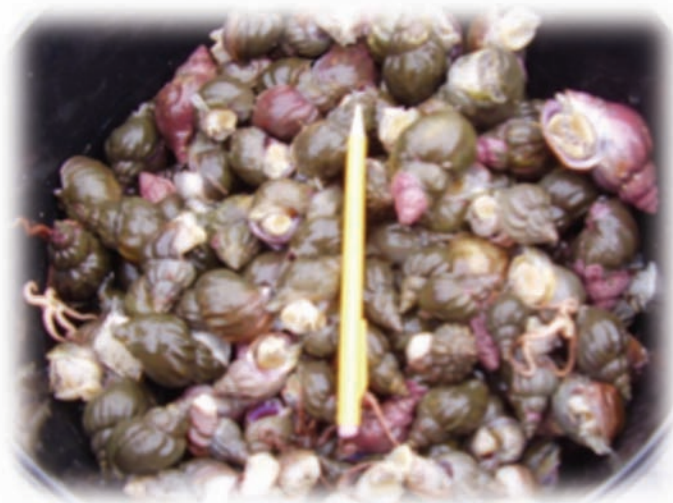
Whelk Survey

In partnership with DFA and local Fish Harvester Carl Hedderson, SABRI administered an offshore Whelk Survey in the summer of 2011.

The Harvesters in SABRI's 4R region (Big Brook to Noddy Bay) have a very limited fishing resource to keep their enterprises viable. The main fishing activity is lump, cod and pelagic. There was an active inshore whelk fishery in the region in the past but the market is sourcing the offshore whelk.

The objectives of this deep water whelk survey were to explore the viability and sustainability of an offshore whelk fishery in SABRI's 4R region and to determine if there is a sufficient offshore resource of whelk in the fishing region to offer harvesters another resource to help make their enterprise sustainable.

Both of the project objectives were attained during the project. The results from the survey show some sign of a potential whelk fishery in certain areas that the survey was conducted. The proponent is determining to fish for whelk in 2012 in the areas that the survey showed a whelk supply. He felt that some of the issues with baited grounds, sea lice, and toad crab may have reduced the results of the 2011 survey.



Report from St. Anthony Seafoods



2011 was another successful year for St. Anthony Seafood's in spite of the higher shore prices for shrimp. Thankfully, our efforts in the Market have responded favorably to price increases which helped offset the high cost for raw materials.

With the support of our partner, SABRI, we were able to secure approximately 4 million lbs of the SABRI shrimp allocation. This created extra quota for our Inshore Shrimp Fleet and approximately 6 weeks employment for our employees, along with the many other economic spin offs to our local businesses.

Snow Crab in area 6 remains unstable with further quota cuts in 2011 and cuts expected again in 2012.

We employed approximately 160 people during the peak season. Our workforce continues to shrink due to retirements and employees finding full time employment elsewhere. Recruitment of employees for offloading services and our 3rd shift in the shrimp plant remains a challenge for us.

Caroline Davis, our General Manager left St. Anthony Seafood's at the end of December 2011 to assume her new position of GM with Air Labrador located in Goose Bay. Caroline moved to be with her family and we wish her the best of luck.

Effective January 1st 2012, Dennis Coates was promoted to General Manager of Shrimp Operations of Clearwater and Daisy Bromley was promoted to Manager of St. Anthony Seafood's.

As we look to the future we are optimistic, that because of our close proximity to the resource, state of the art facility and our dedicated employees, we will remain a viable business in this industry. Clearwater remains committed to St. Anthony Seafoods and looks forward to continued success in its partnership with St. Anthony Basin Resources Inc.

Report from St. Anthony Cold Storage Ltd.



**ST. ANTHONY
COLD
STORAGE**

St. Anthony Cold Storage Limited (SACSL) completed its seventh full year of operation. One of the fishing industry biggest challenges in 2011 was substantial decrease in Mackerel landings from 2010 to 2011. Over the past three years we have seen NOFTA quota reduced from 3400 to 400 Mt, a 40% reduction in the inshore Shrimp, and a complete bust in 2011 Mackerel fishery. While the cold storage maintained 30,000 operational hours this is primarily due to the increased manufacturing of pallets in 2011.



Mussel Farming

SABRI continues to operate three mussel farm sites and a Primary Processing Plant at St. Lunaire-Griquet. The mussels continue to maintain excellent meat yields throughout the season and are of superior quality. This past season SABRI had a 59% increase in local sales.

We continue to investigate opportunities to maximize the potential of the farms and to increase employment. Markets are being investigated in an effort to increase sales and make the venture self-sustaining.

SABRI's Mussel Farm Operation employs three workers on a seasonal basis who are supervised by our Programs Coordinator. The operation also employed one student through the Canada Summer Jobs program.

Fresh from the North Atlantic
Cultured Blue Mussels



*Available for purchase
June - September...*

To purchase mussels or for further information please call 454-3484.



8:30 a.m. - 4 p.m. • Mon. - Fri.

Fresh mussels are also available for purchase at:
Foodland • Grenfell Memorial Co-op
Burden's General Store • Hedderson's Store
Forrester's Point Seafoods • Local Restaurants



Your Board of Directors

Wayne Noel, Chairperson

Rising Sun Developers

Paul Dunphy, 1st Vice-Chair

St. Anthony & Area Chamber of Commerce

Roy Taylor, 2nd Vice-Chair

Plant Worker, St. Anthony Plant

Todd Hedderson, Treasurer

Plant Worker, St. Anthony Plant

Dale Colbourne, Secretary

Communities of St. Lunaire-Griquet to
L'anse aux Meadows

Wilfred Alyward, Director

Fish Harvester, St. Anthony & Goose Cove

Carl Hedderson, Director

Fish Harvester,
Noddy Bay to L'Anse Aux Meadows

Sterling Dawe, Director

Fish Harvester, Big Brook to Ship Cove

Dean Patey, Director

Fish Harvester,
St. Anthony Bight to Great Brehat

Alvohn Pilgrim, Director

Fish Harvester,
St. Lunaire-Griquet to Quirpon

Alick Pilgrim, Director

Plant Worker, St. Anthony Plant

Jim Pilgrim, Director

Communities of Goose Cove to Great Brehat

Eric Boyd, Director

Town Council of St. Anthony

Lester Bessey, Director

Communities of Big Brook to Ship Cove

Loiuse Short, Director

Plant Worker,
Plants other than St. Anthony Plant

Contact Information

Executive Director

Sam Elliott; e-mail: s.elliott@nf.aibn.com

Assistant Executive Director

Glenda Burden; e-mail: gburden@nf.aibn.com

Programs Coordinator

Alicia Shears; e-mail: ashears@nf.aibn.com

Telephone 709-454-3484

Facsimile 709-454-3483

Mailing Address 171 West Street
P.O. Box 69
St. Anthony, NL
Canada A0K 4S0

E-mail: sabri@nf.aibn.com

Website Address: www.sabrinl.com

Facts & Figures

Did you know that since 1997 SABRI....

.... has invested in excess of **\$15.7 million** in infrastructure in the region?

.... has awarded more than **\$212,000** in scholarships to area students?

.... has provided **\$500,000** to communities in the SABRI region?

.... has employed more than **225** individuals from the area?

.... has contributed in excess of **\$3 million** in payroll to residents of the SABRI region?

.... has donated more than **\$270,000** to different groups in the SABRI region?

**Helping to build the economy of
Northern Newfoundland through
investment in our resources
and our people**

