

# Tides

THE NEWSLETTER OF ST. ANTHONY BASIN RESOURCES INC.

MARCH 2011

## Marine Hydraulic Yard Trailor

SABRI partnered with St. Anthony Port Authority on a 50/50 cost sharing basis to purchase a Y-30 Marine Hydraulic Yard Trailer which has the capacity (size) to lift powerboats to 50' LOA and cradled sailboats to 52' LOA, and the capacity (weight) of 60,000 lbs off-road.

This Infrastructure will provide the under 45' vessel owners the opportunity to remove their vessels from the water for servicing when needed and/or for storage during the off season. This is a piece of infrastructure that Fish Harvesters have been requesting to have in the region for a numbers of years. It is expected to allow for greater ef-

ficiency in the maintenance of the vessels operating within the SABRI Region. SABRI, through its Fisheries Budget for 2010, allocated \$40,000 toward the cost of purchasing the lift. The lift will be operated and maintained by St. Anthony Port Authority. It is being fabricated in Parry Sound, Ontario and is scheduled for delivery in May 2011. Every effort is being made by the Port Authority to have infrastructure in place for operation later in the season.

The following pictures have been provided by the manufacturer and show the type of lift that is being purchased.



## Support for Fisheries Initiatives

### Bait

In 2010 SABRI continued with the third year of a Bait Program to provide bait to Fish Harvesters who reside within the SABRI region who use bait for the species that they catch as well as sell their product to a processor within the region. This is not only a benefit to Harvesters but also to Plant Workers as it provides additional product being landed and processed within the region. Other economic activity is also generated through spin-off activities such as offloading and trucking the product. SABRI invested a total of \$53,758 into this program in 2010 and plan to continue the program in the 2011 season.

### Ice Breaking

SABRI has partnered with the Port of St. Anthony since 2007 by contributing to the cost of providing icebreaking services for St. Anthony Harbour. SABRI invested \$2,500 to this initiative in 2010.

### Toad Crab

For several years prior to 2009, Harvesters in the region did not fish for toad crab because there was no market for the product. In 2009 SABRI was fortunate to find a buyer for the toad crab in Valleyfield. This initiative required an investment to get the product trucked from the SABRI Region to the plant in Valleyfield. In 2010 SABRI contributed \$14,795 to this project which has provided the opportunity for local Fish Harvesters to be able to sell their toad crab and provide a much needed revenue source.

### Capelin Trap

SABRI provided assistance in the amount of \$4,009 to a group of Fish Harvesters in North Boat Harbour and Wild Bight toward the cost of twine and floats to construct a capelin trap. The trap is used on the same principle as the mackerel traps are being used, with all of the Fish Harvesters in the communities working together.

### Salt Fish Project

SABRI did a small scale Salt Fish Project in 2010 through a partnership with a local processor. The objective of the project was to survey the market place to see what returns the processor could get for the product to pass on to the harvesters. The results of the project were not available at the time of printing this newsletter.



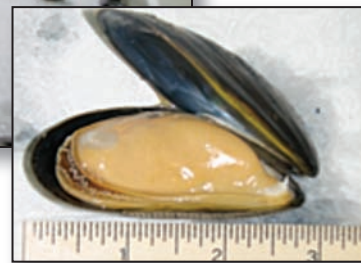
### Mussel Farming

SABRI Continues to operate three mussel farm sites and a Primary Processing Plant at St. Lunaire-Griquet. The mussels continue to maintain excellent meat yields throughout the season and are of superior quality. Sales from the 2010 season were on par with 2009 sales despite breakdowns due to transmission problems.

Before the close of the 2010 season a new transmission was installed on the Timmy B. which will hopefully prevent any breakdowns in the 2011 season, therefore insuring another increase in sales as in 2009.

We continue to investigate opportunities to maximize the potential of the farms and to increase employment.

Keith Pilgrim, Paul Burden and William Patey are employed on a seasonal basis with the mussel farm operation and are committed to ensuring its success. As in previous years our staff also had the help of a student through the Canada Summer Jobs program. In 2010 the student was Monovah Primmer of St. Lunaire-Griquet.



# Supporting Youth Development

## Recreation Donations

SABRI continues to support youth development within the region through donations to recreational organizations. In 2010 SABRI provided a total of \$13,200 in grants to the following organizations:

Junior Girls Broomball	\$1,925
Junior Boys Broomball	\$1,350
Dolphins Swim Team	\$1,350
Viking Trail Ski Club	\$1,350
Northern Blades Figure Skating Club	\$1,925
Aurora Nordic Ski Club	\$1,925
St. Anthony & Area Minor Hockey Association	\$3,375



## SABRI Northern Prawns

SABRI is the corporate sponsor for the Junior Girls Broomball team, SABRI Northern Prawns. The team has excelled and has taken the Provincial Junior Championships for 1998-1999, 2003-2005, 2007-2011.



2011 Provincial Champions



Junior Achievement is a not-for-profit, charitable organization that is recognized worldwide for its business and leadership education to elementary, junior and senior high school students; providing students with the knowledge and training to work independently and innovatively. The Junior Achievement Program is delivered locally through the St. Anthony and Area Chamber of Commerce. Each year the St. Anthony Committee delivers to the Grade 9 students of Harriot Curtis Collegiate, the full day program "Economics of Staying in School". SABRI is a proud sponsor of the Junior Achievement Program within the region, and in 2010 contributed \$600 to this initiative.

# Scholarships & Bursaries

SABRI is proud to offer scholarships and bursaries annually to Level III students within the region who plan to pursue post secondary education; a total of \$14,000 in awards were granted in 2010. Two Scholarships of \$3,000 each were

awarded to Kimberly Green and Danielle Colbourne, both of Harriot Curtis Collegiate. Sixteen students as follows each received bursaries of \$500. (Missing photo: Erin Smith of Harriot Curtis Collegiate)

## Harriot Curtis Collegiate



Chris Pink



Miranda Rose



Sarah Farrell



Victoria Reardon



Colleen jacque



Mike Decker



Kimberly Green



Kent Davis



Katie Rumbolt



Kathy Cull



Kathryn O'Rielly



Danielle Colbourne

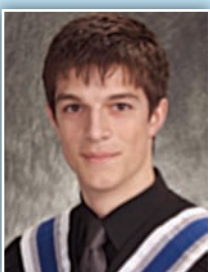


Fraankie Slade

## Bayview Regional Collegiate



Jeffrey Patey

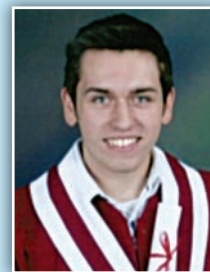


Monovah Primmer

## James Cook Memorial



Randy Pittman



Martin Larkin

## \$10,000 Donation to the Grenfell Foundation

Funding in the amount of \$20,000 was allocated to the Grenfell Foundation for 2010-2011. The funding was designated for the purchase of a Tympanometer. **Pictured is Wilfred Rumbolt, Chair of the Grenfell Foundation and Charles Reardon, Chair of the SABRI Board.**



## Function of a Tympanometer in Patient Health Care:

Tympanometry is a testing methodology that is used to evaluate the function of the middle ear. It provides a graphic representation of the relationship of air pressure in the external ear canal to impedance (resistance to movement) of the ear drum and middle ear system. The information derived from tympanometry provides the physician with additional information regarding the patient's middle ear function. In a pediatric population this is typically to document or rule out the presence of otitis media (fluid behind the eardrum), tympanic membrane perforation or Eustachian tube dysfunction. The test is non-invasive and does not require any response from the patient. Typical test time for both ears is less than two minutes.

**Pictured is the Tympanometer in use with visiting Audiologist Duncan Floyd and future Regional Audiologist Nicole Elford.**



## Save Our Char Committee (SOCC)

SOCC continues to partner with SABRI, Provincial Wildlife, CURRA, MUN and DFO to study the rare local sea run population of Arctic Char. In 2010 the Partnership produced many accomplishments, some of which are as follows:

- The hiring of a coordinator to run the counting fence and further the groups work, SABRI, through a grant from Service Canada funded the wages for the coordinator.
- SABRI provided a new Information centre to be used at the Parkers River site.
- SOCC members, DFO Officers, DFO Science and Local Fishery Guardians set up and dismantled the Counting Fence in 2010.
- Fishery Officers assisted the SOCC coordinator with the day to day operations of the fence.
- SOCC conducted three community information sessions. (Raleigh, Cooks Hr and St. Anthony) 21 people attended. These sessions focused on letting the public know all about the work done to date plus the release of new information like the Counting Fence numbers for 2010 and the results of a Fish Survey administered by MUN ( and CURRA)
- The Survey said local people believe Char are smaller

and the numbers are low compared to the past. 84% believe the Char should be placed on the Species at Risk Act and be protected before they disappear.

- MUN released preliminary findings of the Ear Bone Study. The results conclusively establish this population as sea run and also acknowledge that these Char migrate to sea twice a year.

This information was unknown in the past.



**Amy Cull (SOCC Coordinator), Lloyd Fudge (DFO Science), Sheldon Eddison (DFO), Michelle Bessey (HCC student)**

## Report from St. Anthony Seafoods

2010 was the 12th season of operation for our Shrimp and the 6th year for the Crab operation. It was a year of resurgence for St. Anthony Seafood's. After a very difficult year in 2009 and further quota reductions for 2010, the spring of 2010 was not very hopeful. The fishing season was delayed opening due to disputes with the Price Setting Panel, the result was a late start to the Snow Crab and Shrimp Fishery.

With no inventory and the announcement of quota cuts, the markets responded very favorably to price increases for both Shrimp and Snow crab. As a result of these prices, the fishery was uninterrupted. The Snow Crab in area 6 was a disappointment as the quota was not all harvested but this did result in the market remaining strong throughout the year.

St. Anthony Seafood's employed approximately 175 people during the peak season. Our workforce is shrinking due to retirements and employees looking to Alberta for higher incomes. We are challenged to find enough people to operate the Shrimp plant on the third shift and the Crab plant on a second shift.

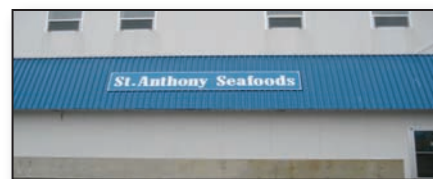
St. Anthony Seafood's have been certified by the BRC, the global leader in third-party food safety standards. These recent certifications recognize St. Anthony/Clearwater Seafood's dedication to excellence in customer satisfaction by assigning an "A" grade to the company's stringent quality control and food safety measures.



Now celebrating 10 years, the BRC has been recognized internationally as the leader in food safety certification. As a member of the Global Food Safety Initiative (GFSI) the BRC is committed to continuous improvement of its food safety standard and requires the same continuous improvement from the food processing facilities they certify. A growing number of retailers and major manufacturers in Europe and North America require this independent certification from their suppliers.

St. Anthony Seafood's Management believes that "Globally recognized certifications such as BRC and MSC (Marine Stewardship Council for fisheries sustainability) help us to ensure that our plants and practices are meeting the best possible standards and provide valuable third party recognition of our commitment to our customers."

This is a global Standard for Food Safety, which ensures



that all Processors follow the highest standards in producing food products for international markets.

Clearwater introduced a new CEO, Ian Smith in early 2010. Mr. Smith visited St. Anthony in July and was very impressed with our facility and our people. Clearwater remains committed to its partnership in St. Anthony Seafoods and looks forward to opportunities to grow the business.

## Report from St. Anthony Cold Storage



St. Anthony Cold Storage Limited (SACSL) will complete its sixth full year of operation year end March 2011. The fishing industry in 2010 was comparable to that in 2009. While the world seafood market has improved the shrimp industry quota cuts have decreased the Inshore Shrimp landings considerably to St. Anthony Cold Storage. We continue to maintain the Eimskip container service and had seven port calls from the vessel Reykjafoss during the 2010 season.

The cold storage had 30,000 man hrs in 2010 resulting in a slight increase over 2009. While our 2010 shrimp volumes have decreased with both the inshore and offshore, we maintained consistent man hours due somewhat in part to our acquisition of the pallet manufacturing division and several new customers. While the pallet division has not reached its target goal to date mainly due to overall decreases in fish production, it has surely complemented our business.

While it is difficult to predict what will happen in 2011 fishery, SACSL is optimistic and committed to the region, continuously evaluating other projects and working towards further diversification of its operation.



# Community Development

The final pieces of work funded for SABRI's Tourism Infrastructure Master Plan were completed in 2010. They include three mobile and three stationary kiosks which are available for use at various festivals or events throughout the region. Community signs, with icons indicating services and attractions within the community, have been installed at the entrance of each community in the SABRI Region. Trailhead and interpretation signs were installed on the trails that were upgraded in 2009 and a trail guide has been completed. A gateway sign has also been installed on Route 436 as you enter the SABRI Region.



The trail guide contains details of trails upgraded by SABRI in 2009 as well as picnic and viewing areas and the Town of St. Anthony trails. The regional map included at the beginning of the book uses icons to indicate what attractions are located at the trail – whether it is rare plants, whale watching or a good place to see icebergs. The guide is also packed with color photographs of some of the spectacular scenery that you will see along the trails. The guide is for sale at various venues for the price of \$5.

## Oral History Project

SABRI printed the oral history stories that had been collected in 2008-09. Copies of each of the 24 magazine type booklets have been given to communities, schools, and libraries within the region. The stories can also be viewed on our website at [www.sabrinl.com](http://www.sabrinl.com). Anyone interested in purchasing the set of stories can do so at the SABRI office at 171 West Street, St. Anthony, the cost is \$130.00 for the full set, while quantities last.

This project identified that there is a wealth of information out there about the regions rich culture and history and much more of this type of work needs to get done. SABRI has applied for project funding and if granted will proceed to collect and record more of the stories, photos, etc that people are offering to share.



## Your Board of Directors

### *Charles Reardon, Chairperson*

Fish Plant Worker, St. Anthony Plant

### *Roy Taylor, 1st Vice-President*

Fish Plant Worker, St. Anthony Plant

### *Paul Dunphy, 2nd Vice-President*

St. Anthony & Area Chamber of Commerce

### *Wayne Noel, Treasurer*

Rising Sun Developers Inc.

### *Dale Colbourne, Secretary*

Communities of St. Lunaire-Griquet to L'anse aux Meadows

### *Wilfred Alyward, Director*

Fish Harvester, St. Anthony & Goose Cove

### *Carl Hedderson, Director*

Fish Harvester, Noddy Bay to L'Anse Aux Meadows

### *Guy Hurley, Director*

Fish Harvester, Big Brook to Ship Cove

### *Dean Patey, Director*

Fish Harvester, St. Anthony Bight to Great Brehat

### *Alvohn Pilgrim, Director*

Fish Harvester, St. Lunaire-Griquet to Quirpon

### *Alick Pilgrim, Director*

Fish Plant Worker, St. Anthony Plant

### *Jim Pilgrim, Director*

Communities of Goose Cove to Great Brehat

### *Arthur Kinsella, Director*

Town Council of St. Anthony

### *Lester Bessey, Director*

Communities of Big Brook to Ship Cove

### *Loiuse Short, Director*

Fish Plant Worker, Plants other than St. Anthony Plant

## Contact Information

### *Executive Director*

Sam Elliott; e-mail: [s.elliott@nf.aibn.com](mailto:s.elliott@nf.aibn.com)

### *Assistant Executive Director*

Glenda Burden; e-mail: [gburden@nf.aibn.com](mailto:gburden@nf.aibn.com)

### *Programs Coordinator*

Alicia Shears; e-mail: [ashears@nf.aibn.com](mailto:ashears@nf.aibn.com)

**Telephone** 709-454-3484

**Facsimile** 709-454-3483

**Mailing Address** 171 West Street  
P.O. Box 69  
St. Anthony, NL  
Canada A0K 4S0

**E-mail:** [sabri@nf.aibn.com](mailto:sabri@nf.aibn.com)

**Website Address:** [www.sabrinl.com](http://www.sabrinl.com)

## Facts & Figures

Did you know that since 1997 SABRI....

.... has invested in excess of **\$15.7 million** in infrastructure in the region?

.... has awarded more than **\$204,000** in scholarships to area students?

.... has provided **\$500,000** to communities in the SABRI region?

.... has employed more than **225** individuals from the area?

.... has contributed in excess of **\$3 million** in payroll to residents of the SABRI region?

.... has donated more than **\$209,000** to different groups in the SABRI region?

**Helping to build the economy of  
Northern Newfoundland through  
investment in our resources  
and our people**

