

Report from St. Anthony Seafoods

With the recent reopening of the Newfoundland Inshore Shrimp fishery, the St. Anthony factory is back into full production with three shifts of employees. The opening was somewhat delayed by the Labor Day holiday and poor weather.

The counts are in the mid to high eighties per pound but attributed to high levels of roe on the product. This has a severe impact on yields as factories are currently four to six percent below where the season ended in July. This is being compounded by the weakness of the market which has seen a drop in price between fifteen and twenty percent. This represents a loss of tens of millions of dollars to the fishing industry.

The coldwater shrimp business is under extreme pressure from the warm water shrimp producers. Countries, like Bangladesh, Thailand, India, and Chile, heavily support their industry with World Bank forgivable loans and very low wage rates. Their production has mass appeal in the US market because of size at much cheaper prices than the smaller, higher priced coldwater shrimp.

This throws the whole inshore shrimp industry into doubt as factories face huge losses with every pound of shrimp produced. The world's shrimp fishing industries are in crisis as factories focus on every aspect of their operation to reduce costs in this near-collapse market.

The business has been active over the season in cod with very low landings in the local area. In contrast to the fillet production of 2001 SAS produced salt fish products this past season. There has been some pelagics, mainly in mackerel with a tiny amount of herring. These products has been purchased in the local area and frozen into bait products.

The rock and toad crab fishery was delayed but a lengthy lobby by SABRI and the FFAW convinced Beothic Fisheries to participate in the production this year. They were reluctant as still held high inventories of meat produced last season. The catch has remained high and we have shipped approximately the agreed amount of 400,000 pounds to date. The amount has since been increased a further 200,000 pounds in a competitive fishery.

The business continues to pursue efforts to establish a snow crab processing operation at St. Anthony. Our latest efforts were associated with a license transfer from Ramea. After a lot of public outcry, the government decided it was unacceptable. We continue to advance our legal proceedings with a trial set for late in the current year.

Your board of directors

Charles Reardon, Chairman — Plant Worker, St. Anthony Plant
Norman Cull, First Vice-Chairman — Fish Harvester, St. Anthony Bight to Great Breat
Tony Richards, Second Vice-Chairman — Plant Worker, St. Anthony Plant
Wade Saunders, Secretary — Fish Harvester, St. Lunaire to Quirpon
Wayne Noel, Treasurer — Rising Sun Developers Inc.
Wilfred Alyward — Fish Harvester, St. Anthony and Goose Cove
Baxter Hedderson — Fish Harvester, Noddy Bay to L'Anse aux Meadows
Guy Hurley — Fish Harvester, Big Brook to Ship Cove
Alick Pilgrim — Plant Worker, St. Anthony Plant
Mamie Carroll — Plant Worker, Other than St. Anthony
Wayne Taylor — Communities from Goose Cove to Great Breat
Todd Hedderson — Communities from St. Lunaire-Griquet to L'Anse aux Meadows
Jeff Penney — St. Anthony and Area Chamber of Commerce
(Vacant) — Communities from Big Brook to Ship Cove
Guy Perry — Ex-Officio, Fish, Food and Allied Workers' union
Joe Kennedy — Ex-Officio, Department of Fisheries and Aquaculture

Contact information

Executive Director

Sam Elliott E-mail: selliot1@nf.sympatico.ca

Administrative Assistant

Glenda Noble

Telephone 709-454 3484

Facsimile 709-454 3483

Address 171 West Street, P. O. Box 69
 St. Anthony, NF, Canada A0K 4S0

E-Mail st.anthony.basin@nf.sympatico.ca



Tides

THE NEWSLETTER OF ST. ANTHONY BASIN RESOURCES INC.

VOL. 4 NO. 1

SABRI offering business development services

SABRI has entered into a partnership with Atlantic Opportunities Agency (AOA) to provide business development services to residents of SABRI's region. SABRI has contracted Dave Simms of Great Northern Peninsula Development Corporation from Plum Point to undertake this project. The project commenced in July of 2002 and is available up to three years with an evaluation after each year. The cost of the project is \$225,000 with AOA contributing 75% or \$175,000 and SABRI contributing 25% or \$50,000.

Through this partnership we are offering business development support to encourage and nurture the creation of successful new enterprises. Local entrepreneurs can avail of

'SABRI will help entrepreneurs take their business ideas from the conceptual stage to a practical reality.'

a range of facilitating services from SABRI to develop their business idea.

The primary focus is on the "business germination" aspect of support programs. By providing professional facilitating assistance, SABRI will help entrepreneurs take their business ideas from the conceptual stage to a practical reality. This assistance will compliment the existing business support capacity available in our area and promote

new enterprise development in an optimal manner.

Services can range from idea evaluation or business planning, to creating partnerships, linkages to investment financing or networking and mentoring. The objectives of this business development support is to increase the local support capacity for development of entrepreneurial activity; reduce the constraints to new enterprise development and to accelerate the rate of business growth and employment creation in the SABRI region.

If there is anyone who has an idea for a potential business venture in the SABRI region please contact our office and we'll help you turn it into a reality.

Small boat fishermen welcome toad crab fishery

At the beginning of the fishing season, having a toad crab fishery didn't look promising. Due to poor markets over the past



Dean Peyton (left) and Danny Earle transport their toad crab from St. Lunaire-Griquet to the St. Anthony Seafoods' plant, where it is loaded in trailers and trucked to Valleyfield, Bonavista Bay.

winter, Beothic had plenty of inventory for this season and did not expect to buy toad crab from the fishermen on the Northern Peninsula. After several conversations between SABRI, Beothic and the Fishermen's Union it was decided that Beothic would buy 400,000 lbs of toad crab and all the rock crab available from the fishermen in the SABRI region. In addition they would buy 60,000 lbs from fishermen in Main Brook to Englee area.

After such a poor lump and cod fishery this season, the toad crab fishery was welcomed by the fishermen, especially those fishing in 4R since they had nothing else to look forward to. SABRI again this season covered all costs involved in trucking the product from St. Anthony to Valleyfield. St. Anthony Seafoods purchased the product and co-ordinated the

trucking on behalf of Beothic. There were an additional 6 toad crab licences for toad crab in 4R and 1 additional rock crab licence. This brought total licences to 36 toad crab (12 in 3K and 24 in 4R), and 5 rock crab (2 in 3K and 3 in 4R). SABRI provided each new entrant with 50 pots as previously done for existing rock/toad crab fishermen.

As the season was starting to wind down, Beothic decided to buy an additional 200,000 lbs of toad crab. It was allocated with 25,000 lbs for fishermen from Main Brook to Englee and 175,000 lbs for fishermen in SABRI region, Big Brook to Goose Cove. As of Saturday, September 28 there was 505,000 lbs of toad crab and 50,000 lbs of rock crab caught by SABRI fishermen and shipped to Beothic for processing.

Fishermen were very thankful to all parties involved for getting this fishery going for the past season. It meant saving people from having to leave this area to find work in order to qualify for employment insurance for the winter.





Supporting the Grenfell Foundation

SABRI made a corporate donation to the newly-formed Grenfell Foundation. It is a not-for-profit corporation designed to raise funds for equipment, etc. for the hospital and clinics serviced by Grenfell Regional Health Services. The donation was in the amount of \$10,000.00 which will be matched dollar for dollar by the provincial government. The

health care of our people is of the utmost importance and we must do everything possible to uphold this very important service. On hand for the presentation were: (l-r) — Gary Newell, co-ordinator of the foundation; Marshall Dean, chairman of the board for the Grenfell Foundation; Charlie Reardon, chairman of the board for SABRI; and Sam Elliott, executive director of SABRI.

MUSSEL FARMING

Two sites in St. Lunaire Bay ready for occupancy in 2003

SABRI is continuing its efforts in mussel farming. Application was made for occupation of three sites in the St. Lunaire-Griquet area in May of 2002. They included Northwest Bay and Southwest Bay in St. Lunaire Bay and Northwest Arm in Griquet Harbour. To date a licence has been received for one site only, Northwest Arm in Griquet Harbour.

Two employees were hired this past summer to prepare the site for the transfer of seed. The permission to transfer seed from Arctic Aquafarms has been received and will take place within the next couple of weeks. Up to 10,000 pounds of mussel seed will be socked off and placed in the Northwest Arm site to grow over the

winter. The employees will monitor the growth rates of the seed for a month or so after socking and prepare the site for winter.

The other two sites in St. Lunaire Bay will be ready for occupation at the start of summer of 2003. SABRI may be hiring a couple of more people next summer to help prepare these sites and monitor all three over the summer and record their growth rates. Ultimately, SABRI would like to see approximately 2 million pounds of mussels harvested each year in the SABRI region. An adequate volume of mussels can then justify a primary and secondary mussel processing facility in the SABRI region.

Supporting the whelk fishery...

SABRI is continuing to help fishermen involved in the fishery. This year SABRI will be providing 10¢/lb to the fishermen for each pound of whelk they catch. After the season is over fishermen are required to bring their receipts to the SABRI office in order to get their reimbursement for the amount of whelk they caught.

Attending sealers conference

As part of the fishermen's budget for 2002, it was decided to use a portion of it to send a number of fishermen to the sealers conference which will be held in Gander on November 12 and 13. It was seen as a very important meeting and sealers from this area need to be represented. With the terrible fishing season this year it was felt a lot of fishermen wouldn't be able to attend without some help from SABRI. SABRI will cover the cost of registration and the travel to and from Gander.

Local students awarded SABRI scholarships

SABRI presented annual scholarships once again to three youth in the SABRI region who graduated from Level III and who are currently attending a post-secondary institution of their choice. Each scholarship is valued at \$1000.00. They were awarded to:

Amanda Short of James Cook Memorial in Cook's Harbour. She is currently enrolled in the First Year Business Administration course at the College of the North Atlantic in St. Anthony.

Christopher Linstead of Harriot Curtis Collegiate in St. Anthony who is currently attending University of Victoria in British Columbia. He is pursuing a Bachelor's Degree in Business

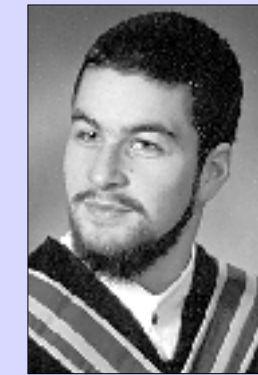
Administration to be followed by a Master Degree and one day would like to be involved in International Business.

Tony Adey of Bayview Collegiate in St. Lunaire-Griquet. He is attending

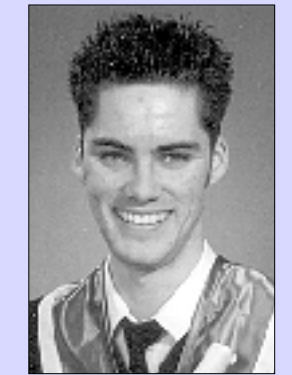
Memorial University working towards a Bachelor of Science Degree with major work in Biology. Upon completion he hopes to obtain an Education Degree and teach high school science.



AMANDA SHORT



CHRISTOPHER LINSTEAD



TONY ADEY

Sponsoring broomball

SABRI continues to be the corporate sponsor for the Junior Girls Broomball Team, SABRI Northern Prawns. SABRI also sponsors a minor softball team every summer in addition to numerous donations to other sports teams who travel away to compete in tournaments. The youth are the future of our area and we want to ensure they are taken care of.

Summer student

SABRI had a student hired for 8 weeks this past summer in partnership with HRDC. Ms. Chantelle Simms, of St. Anthony, was hired as a Youth Development Officer with SABRI. She went around to the communities in the SABRI region and spoke to the youth. She arranged events in the region for the youth and had them complete surveys on what their plans were for the future and if there was anything SABRI could do to encourage them to return home once their schooling was complete.

Changes in Clearwater/SABRI scholarships

This program was formerly only for Marine Engineering students. With the lack of applications received for Marine Engineering, it was decided by both SABRI and Clearwater to change the program to encompass a greater number of programs. Now the scholarship includes Marine Engineering, Bachelor of Science, Diploma in Food Technology, Electrical Engineering, Mechanical Engineering, Marine Diesel, Millwright, Welding, and Aquaculture Diploma. If enrolled in degree or diploma programs of 3 to 4 years duration, you would receive \$2500.00 per year. If you are completing

a technical or certificate program of 1 to 2 years duration, you would receive \$1000.00 per year. Students must still be residents or have an attachment to the SABRI region. Also a B average must be maintained in order to continue in the scholarship program. Students are required to submit a transcript of their marks upon completion of every term.

Prior students who are still in the program include: Tim Ireland, completing last term of Marine Engineering program; Byron Blake & Randy McGrath, currently enrolled in year 2 of Marine Engineering program.



Winners of the 2002 scholarships, which amount to \$2,500 per year for a three-year study program, include: (l-r) — Ivan Roberts, St. Anthony; Chantelle Simms, St. Anthony; Mike Best, St. Anthony; Charlie Reardon, chairman of the board for SABRI; Rocky Hussey, St. Lunaire-Griquet; and John Smith, Raleigh. Missing from photo is Dino Earle of St. Lunaire-Griquet, who received a \$1,000 scholarship for a one-year program.