

Tides

THE NEWSLETTER OF ST. ANTHONY BASIN RESOURCES INC.

MAY 2010



Community Development

With an investment of \$160,000, SABRI was successful in leveraging \$1.4 million for Tourism Infrastructure upgrades within the region.

In 2009 SABRI administered a project which involved upgrading trails in the communities of Wild Bight, Goose Cove, St. Carol's, Great Brehat, Raleigh, Ship Cove, St. Lunaire-Griquet, Straitsview and Hay Cove. Picnic sites and viewing areas were also developed in the communities of North Boat Harbour, Cook's Harbour, and Noddy Bay. This was made possible by funding contributed by SABRI, INTRD, and Service Canada, 16 people were employed for 25 weeks to complete the work. Community Representatives from throughout the region have told us that this project was a great success and recommend that SABRI continue to work on behalf of the communities to leverage further funding to continue upgrading tourism infrastructure within the region.

Other Tourism Infrastructure Upgrades completed in 2009 included removing and replacing the cruise docking facilities at L'Anse aux Meadows and development of a walking access to the French Oven Site at Quirpon.

This work was made possible through investments of funding by SABRI, ACOA, and INTRD and was completed by contractors.

The signage and kiosks were completed in March 2010 and is ready for use in the Spring. Community signs like the one in the picture shown will be installed as you enter each of the sixteen communities within the SABRI Region. Trailhead and interpretation signs similar to those shown below will be installed on the trails in the Spring of 2010.



Oral History Project

In October 2008, and for a period of one year, SABRI hired a Researcher, Mrs. Kathleen Tucker of Ship Cove, to document historical and cultural stories from residents of the region. This project was funded in partnership with Service Canada, and was a great success. The stories and photo essays have been professionally printed, and copies have been distributed to local libraries and schools, and can be viewed online at www.sabrinl.com. The photos shown below are some of the ones collected through this project, which are included in the Oral History stories, we encourage you to read the stories to learn more about the photos.

"In collecting stories in 2008-2009 in the SABRI Region of the Northern Peninsula, I attempted, wherever possible, to preserve the dialect of each person and community; so the reader will notice that some interviews were written in an interview format, while others were written in story form.

There are a couple of reasons for this: one, I attempted to preserve the dialect wherever possible and, two, some of the

information gathered was more historical in nature than of a story-telling nature. Also, some people were natural story-tellers, and others simply recited facts.

People come in all shapes and sizes and types, and in each of these stories the reader will find not only memories of the past, but the genuine imprint of the character of the person interviewed.

The reader may also discover either cultural or technical errors while reading these documents. I apologize in advance for these errors; they will be a result of my ignorance of customs and traditions, rather than errors on the part of the people interviewed."

Sincerely,

Kathleen Tucker



DONATIONS

Donation to James Cook Memorial

Message from the Principal, Nadine Burden
James Cook Memorial is a small school with a student population of 29. The students felt they needed more of a voice at the school and it was decided that a student council would be formed. The staff at JCM heard about a Provincial



Student Leadership Conference (PSLC) that was being held in the Goulds and decided that this conference would be a good starting

point for our student council.

We requested funding from SABRI for travel purposes and were successful in obtaining \$500.00 and we were set to go. The funding provided four students from JCM with a wonderful experience. They learned how to set up and run a student council, took part in spirit activities and met a lot of new people. Needless to say the students were talking about the trip for weeks.



The funding provided by SABRI enabled our student body to set up a student council, which has been active through this school year. To date they have planned and organized numerous events for our school such as comfy chair day, theme days, Pennies for Peace, and so much more. In terms of successfulness we would have to say that it is probably the best \$500.00 investment ever. Not only did four students get to travel to the PSLC, but 29 students got to benefit from the end results.

The staff and students from JCM would like to thank SABRI for their contribution to our school and to take pride in the knowledge that the funding provided really made a difference at our school.

Donation to the Grenfell Foundation

Funding in the amount of \$10,000 was allocated to the Grenfell Foundation in 2009. The funding was designated for the purchase of an Arjo Maxi Move Lift. This resident lift ensures safe, comfortable and dignified transfers. It also has an integrated scale option, which allows residents to be weighed during transfers.



In Memoriam

Mamie Carroll was first elected to the Board of Directors of St. Anthony Basin Resources Inc. in April 2000, and was in her tenth year of service at the time of her passing in August 2009. Mamie was a very dedicated Board Member who worked tirelessly on behalf of the people of the region and took great pride in doing so. She is sadly missed by her friends and colleagues at SABRI.



Mamie Carroll
June 21, 1950 to August 8, 2009

Report From St. Anthony Cold Storage



St. Anthony Cold Storage Ltd. completed its fifth full year of operation in March 2010. The fishing industry in 2009 was overall very tough considering that Inshore Shrimp landings decreased considerably when compared to 2008. We had one reefer vessel versus the thirteen in the previous year however we continued to maintain the Eimskip container service with the vessel Reykjafoss during the 2009 season with destinations in Germany, Denmark and UK.

The cold storage had 28,000 man hrs in 2009 which was a decrease of approx 5,000 man hrs from 2008. This would have been considerably lower only for we purchased a pallet manufacturing company and hired an additional full time engineer. The pallet company potential was also affected in 2009 with decrease in fish production. However we are presently working on pallet business outside of the fishing business and hope to expand considerably in 2010.

At this stage it's difficult to predict what will happen in 2010 fishery, however it doesn't look optimistic and thus we must



continue to evaluate other projects and work towards future diversification in the operation.

Report From St. Anthony's Seafoods



St. Anthony Seafood's like all other companies that export into the US and Europe had a very difficult year in 2009. The fishing season was delayed opening due to ice conditions. When the fishermen did start fishing, the foreign exchange rates had extremely decreased with the strong Canadian dollar. The Shrimp inventory overhand from 2008 season resulted in European buyers not being eager to purchase any significant volumes until August. The result was a 6 weeks fishery closure in June-July. When the fishing resumed in July, fishermen experienced very dramatic decrease in catch rates and the shrimp that was harvested was smaller in size. The Shrimp operation was dramatically reduced from previous years. Many plant workers were able to qualify for EI benefits as a result of using insurable weeks carried over unused from the fall of 2008.

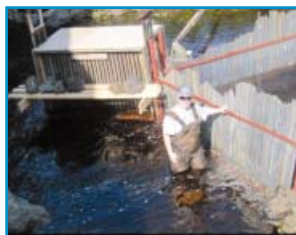


Save Our Char

The Save our Char committee was developed in the fall of 2007 out of concern for the significant decline of Arctic Char in the Pistolet Bay area. The committee was originally formed in 1982 but had been dormant over the years until the committee members observed a large decline in the Arctic Char stock.

The committee is concerned that this small unique population of Arctic Char may become extinct. In response, they wanted to start the process of getting this decline reversed before it was too late to save these fish.

The committee partnered with the Department of Fisheries



and Oceans, Nordic Economic Development Corporation, SABRI, CURRA, MUN, and the Department of Natural Resources – Forestry & Wildlife Division to develop a plan to address the committees concerns. A 5 Year Strategic Recovery Plan has been developed.

Through a funding partnership with Service Canada under the Career Focus Program, SABRI was able to hire Carla Hedderson as Coordinator for the study for 30 weeks. Carla is a resident of Noddy Bay and is a recent graduate of the Fish and Wildlife Technician Program at the College of the North Atlantic and is pictured below at the counting fence site.



Brush Clearing Project

SABRI administered a Brush Clearing Project in the Fall of 2009 which employed 50 people from within the region who needed as little as half a day to as much as nine weeks to qualify for EI benefits after a poor year in the Fishing Industry. The funding for this initiative was received through the Community Enhancement Program which is administered by the Department of Municipal and Provincial Affairs.

Recreation Donations

SABRI continues to support youth development within the region through donations to recreational organizations. In 2009 SABRI provided a total of \$10,000 in grants to the following organizations:

Junior Girls Broomball.....	\$1500
Junior Boys Broomball.....	\$1000
Dolphins Swim Team	\$1000
Viking Trail Ski Club.....	\$1000
Northern Blades Figure Skating Club.....	\$1500
Aurora Nordic Ski Club.....	\$1500
St. Anthony & Area Minor Hockey.....	\$2500



In addition to the grants, SABRI donated to individual members of the recreation organizations who excelled in their sport and were selected for provincial teams, who travelled to compete. An additional \$1,250 was disbursed in this way.

SABRI reviewed its Youth Recreation Grants Program in 2009 and have made some changes for 2010. The total for the grants was increased to \$13,200, the grants to each group will increase proportionately. Requests from individuals or groups travelling to compete will not be entertained by SABRI in 2010 as all funds budgeted for youth recreation will now go to the organizations indicated above.



The Provincials for Junior Broomball were held in St. Anthony in 2009, SABRI donated \$600 for awards for this event.

SABRI Northern Prawns

SABRI is the corporate sponsor for the Junior Girls Broomball team, SABRI Northern Prawns, the team is shown in the photo (Left) wearing the new team jerseys purchased in 2009. The team has excelled and has taken the Provincials title for 1997-1999, 2003-2006, 2007/08, and 2008/09.

Junior Achievement Sponsorship

Junior Achievement is a not-for-profit, charitable organization that is recognized worldwide for its business and leadership education to elementary, junior and senior high school students; providing students with the knowledge and training to work independently and innovatively. The Junior Achievement Program is delivered locally through the St. Anthony and Area Chamber of Commerce. Each year the St. Anthony Committee delivers to the Grade 9 students of Harriot Curtis Collegiate, the full day program “Economics of Staying in School”. SABRI is a proud sponsor of the Junior Achievement Program within the region, and in 2009 contributed \$600 to this initiative.



SUPPORT FOR FISHERIES INITIATIVES

Mussel Farming

SABRI continues to operate three mussel farm sites and a Primary Processing Plant at St. Lunaire-Griquet. The mussels continue to maintain excellent meat yields throughout the season and are of superior quality. This past season SABRI had a 43% increase in local sales.

We continue to investigate opportunities to maximize the potential of the farms and to increase employment. Markets are being investigated in an effort to increase sales and make the venture self-sustaining.

SABRI's Mussel Farm Operation employs three workers on a seasonal basis who are supervised by our Programs Coordinator.

For the past five years SABRI, in partnership with Service Canada's Summer Jobs Program, has employed a student with the Mussel Farm Operation, providing valuable work experience within the Aquaculture Industry. In 2009 Kenneth Peyton of St. Lunaire-Griquet was employed in the student position. In 2009, Robyn Hillier, a student with the Marine Institute also came to work with SABRI's mussel farms to complete a work term for her Marine Environmental Technology Diploma.



In 2009, Robyn Hillier, a student with the Marine Institute also came to work with SABRI's mussel farms to complete a work term for her Marine Environmental Technology Diploma.

Toad Crab

The toad crab fishery has not been active within the region for a number of years due to lack of markets for the product. However, SABRI was able to find a buyer for the product in 2009 and covered trucking costs to ship it to a plant at Vallyfield for processing. This proved to be beneficial to some Fish Harvesters within the region, however a number of factors, including weather conditions prevented this project from realizing its full potential. SABRI invested \$18,840 into this initiative in 2009.

Sea Cucumber

The fifth and final year of the Sea Cucumber Survey was completed in 2009. SABRI has partnered with the Department of Fisheries and Aquaculture over the past five years to complete the science work to determine the viability and sustainability of a Sea Cucumber Fishery within the region. The Department of Fisheries and Oceans will review the surveys and determine the level of harvesting activity that will be permitted for the sea cucumbers in the region.



Bait

In 2009 SABRI made an investment of \$21,580 to provide bait to Fish Harvesters who reside within the SABRI region who use bait for the species that they catch as well as sell their product to a processor within the region. This is not only a benefit to Harvesters but also to Plant Workers because it provides additional product being landed. This also provides other benefits to the region through the spin-off effect as more economic activity is generated.

Ice Breaking

As was done for the past several years, SABRI partnered with the Port of St. Anthony by contributing \$2,500 to the cost of ice breaking services in St. Anthony Harbour. This service has been much appreciated by Fish Harvesters who use the port.

Salt Fish Project

SABRI partnered with the Department of Fisheries and Aquaculture in 2009 to do a Salt Fish Project. The focus of the project was to get information on yields and quality of salt fish processed at sea. The project provided some interesting information, and we plan to complete the project again in the 2010 season with a focus on marketing the product to see if there is potential for a greater return to the harvester.



SABRI Scholarships & Bursaries

In 2009 SABRI awarded \$9,000 in Scholarships and Bursaries to students within the region. Kayla Carroll and Courtney Patey of Bayview Regional Collegiate were each recipients of Scholarships of \$3,000; Caitlin Simms, Noelle Johnson, and Gregory Roberts of Harriot Curtis Collegiate were each recipients of \$1,000 Bursaries. SABRI is proud to offer this level of support to students in the region who are pursuing post secondary education.

Recipients for 2009 were:

Harriot Curtis Collegiate



CAITLIN SIMMS



NOELLE JOHNSON



GREGORY ROBERTS

Bayview Regional Collegiate



KAYLA CARROLL



COURTNEY PATEY

Miss Teen Achievement

SABRI sponsored Miss Kayla Carroll of St. Lunaire-Griquet in the amount of \$250 for the Miss Teen Achievement Newfoundland & Labrador Pageant in 2009. We were privileged to have Kayla speak at our AGM in May 2009, she is pictured here with the Board of Directors of SABRI.



Message from Kayla:

“St. Anthony Basin Resources Incorporated is an incredible organization that I have been privileged to learn more about and work with over the last few months. Their value to our region is substantial and deserving of our attention and appreciation. Thanks to their dedication to improving the lives of the people they serve, I was able to be a participant in the Miss Teen Achievement Newfoundland and Labrador 2009 Scholarship pageant. As the winner of the title, SABRI was represented at my homecoming congratulation party, and I was also invited to be a special guest at their Annual General Meeting last May. SABRI has also contributed to my provincial inspirational workshop, “Girl Power” that was debuted in St. Anthony on June 29th, 2009 and was very successful largely in part of their generosity. I was also very fortunate to receive financial support in the form of a bursary last June that has enabled me to attend post secondary. Their staff and board of directors works tirelessly to serve the people of the area and are to be commended for their hard work. Thank you, SABRI, I will never forget your kindness.”



Sincerely,

Kayla Carroll

Miss Teen Achievement Newfoundland and Labrador 2009

Your board of directors

Charles Reardon, Chairperson

Fish Plant Worker, St. Anthony Plant

Roy Taylor, 1st Vice-President

Fish Plant Worker, St. Anthony Plant

Paul Dunphy, 2nd Vice-President

St. Anthony & Area Chamber of Commerce

Wayne Noel, Treasurer

Rising Sun Developers Inc.

Dale Colbourne, Secretary

Communities of St. Lunaire-Griquet to L'Anse aux Meadows

Wilfred Alyward, Fish Harvester

St. Anthony & Goose Cove

Vacant, Fish Harvester

Noddy Bay to L'Anse aux Meadows

Guy Hurley, Fish Harvester

Big Brook to Ship Cove

Dean Patey, Fish Harvester

St. Anthony Bight to Great Breat

Alvohn Pilgrim, Fish Harvester

St. Lunaire-Griquet to Quirpon

Alick Pilgrim, Plant Worker

St. Anthony Plant

Louise Short, Plant Worker

Other than St. Anthony Plant

Jim Pilgrim

Communities of Goose Cove to Great Breat

Arthur Kinsella

Town Council of St. Anthony

Lester Bessey

Communities of Big Brook to Ship Cove

Contact information

Executive Director

Sam Elliott; e-mail: s.elliott@nf.aibn.com

Assistant Executive Director

Glenda Burden; e-mail: gburden@nf.aibn.com

Programs Coordinator

Alicia Shears; e-mail: ashears@nf.aibn.com

Telephone 709-454-3484

Facsimile 709-454-3483

Mailing Address

171 West Street, P.O. Box 69
St. Anthony, NL, Canada A0K 4S0

E-mail: sabri@nf.aibn.com

Website Address: www.sabrinl.com

Facts & Figures

Since St. Anthony Basin Resources Inc. was formed in 1997:

Did you know that SABRI...

- ✓ ... has invested in excess of **\$15.7 million** in infrastructure in the region?
- ✓ ... has awarded more than **\$190,000** in scholarships to area students?
- ✓ ... has invested **\$500,000** in community Development in the region?
- ✓ ... has employed more than **225** individuals from the area?
- ✓ ... has contributed in excess of **\$3 million** in payroll to residents of the SABRI region?
- ✓ ... has donated more than **\$194,000** to different groups in the SABRI region?

**Helping to build the economy of
Northern Newfoundland through
investment in our resources
and our people**

